

# THE FARMACY

## AUGUST NEWS

**UK** Martin-Gatton  
College of Agriculture,  
Food and Environment

Cooperative Extension Service  
Scott County  
1130 Cincinnati Rd  
Georgetown KY 40324-8934  
(502) 863-0984  
Fax: (502) 863-2392  
extension.ca.uky.edu

## Agent Remarks

Summer is flying by and fall is quickly approaching. I know am looking forward to the cooler weather, along with wrapping up my wedding planning for my wedding in October. State fair is upon us as well. I look forward to watching our Scott County 4-H and FFA members exhibit their projects this year.

I know many farmers are busy. Whether that be preparing for harvest, making hay, or weaning calves. This time of year can be considered the calm before the full swing of the fall rush. The majority of this months articles pertain to getting producers ready for the upcoming busy season.

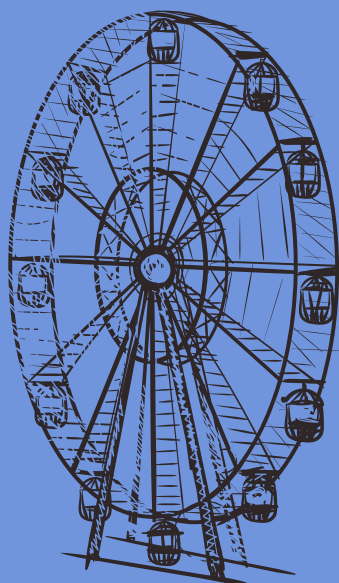
The event section is also longer this month. Check out the flyer for the feeder calf grading school happening at the Stockyards on September 8<sup>th</sup>. This will be a very hands-on practical training for beef producers. You can also find the dates and information for the Scott County Soil Conservation Fall Harvest Banquet, Scott County 4-H Open House, Farm City Banquet, Beef Bash, and more.

Have a great August!  
Stay safe!  
Brittany



### In This Issue

Agent Remarks.....	1
Crops.....	2
Ag Economics and Policy.....	3
Forage News.....	4
August Recipe.....	5
Conservation Corner.....	5
Livestock.....	6
Natural Resources.....	7
Events.....	8-11



### Cooperative Extension Service

Agriculture and Natural Resources  
Family and Consumer Sciences  
4-H Youth Development  
Community and Economic Development

### MARTIN-GATTON COLLEGE OF AGRICULTURE, FOOD AND ENVIRONMENT

Educational programs of Kentucky Cooperative Extension serve all people regardless of economic or social status and will not discriminate on the basis of race, color, ethnic origin, national origin, creed, religion, political belief, sex, sexual orientation, gender identity, gender expression, pregnancy, marital status, genetic information, age, veteran status, physical or mental disability or reprisal or retaliation for prior civil rights activity. Reasonable accommodation of disability may be available with prior notice. Program information may be made available in languages other than English.  
University of Kentucky, Kentucky State University, U.S. Department of Agriculture, and Kentucky Counties, Cooperating.  
Lexington, KY 40506





# Crops

## Tips for Harvesting and Storing High Quality Corn Silage

-Donna M Amaral-Philips

Corn silage forms the backbone of many winter and year-round feeding programs for dairy cows and heifers. Corn silage is an excellent source of energy that can reduce the costs of providing energy (starches) in the dairy cow's diet while also serving as a digestible fiber source. Paying attention to a few details while harvesting and storing corn silage can help ensure that a high quality feed is preserved.

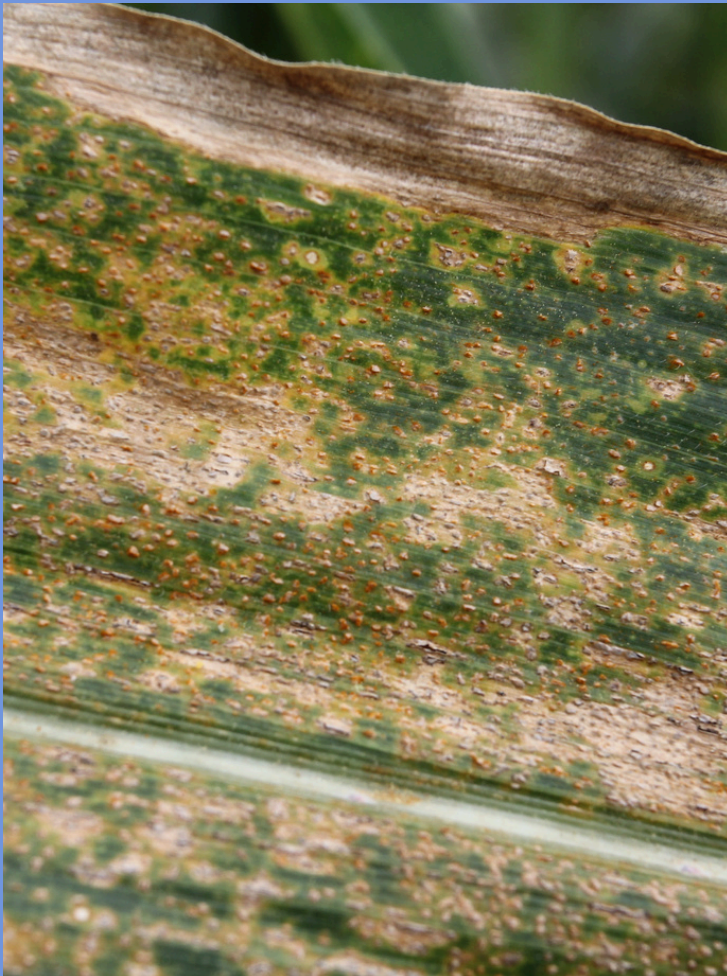
These details are outlined below.

Click [HERE](#) to read more!



## Late Season Corn Disease Identification

-Bayer Crop Sciences



- Utilizing the correct management tactics for corn diseases depends on proper identification of the disease, the severity of the infection, and the anticipated spread of the disease.
- The information below can help identify late-season foliar, stalk, and ear diseases of corn and their management tactics.
- While some of these foliar diseases can occur during the early season and mid-season window, they occur most often in the late season, from tasseling to black layer.

Click [HERE](#) to read more!



# Ag Economics and Policy

## Thoughts on Two Big Cattle Reports

-Southern Ag Today

The July Cattle and Cattle on Feed reports from USDA provided indications that the cattle herd is approaching a low in inventory but may not be there just yet. The mid-year Cattle report provided a first estimate of the 2025 calf crop, which is projected to be roughly 1.3 percent smaller than the 2024 calf crop. Combined with January's report of fewer beef cow replacement heifers, this is an indication that the cattle herd may still be smaller come January 2026.

Click [HERE](#) to read more!



## Real Estate Rising: Farmland Values Hit Record High

-Daniel Munch, AFB

Agricultural real estate values increased by \$180 an acre over last year, according to USDA's National Agricultural Statistics Service (NASS).

The Land Values 2025 Summary Report, released on Aug. 1, shows a 4.3% increase, bringing the average to \$4,350 per acre. This follows a 5%, or \$200, increase between 2023 and 2024 and marks the fifth consecutive increase in agricultural land values. Cash rent values for cropland were up 0.6% to a record \$161 per acre and pastureland rent stayed flat at \$16 per acre.

Click [HERE](#) to read more!





# Forage News

## Stockpiling for Fall Grazing

-UKY Forages

Now is the time to prepare for stockpiling fescue pastures. Simply follow the guidelines:

Choose a strong tall fescue sod in a field that is well drained. To get the maximum yield response to nitrogen applications you will need a healthy stand of tall fescue. Choosing a field that is well-drained will help to ensure that the stockpile can be grazed with minimal pugging damage during the wet winter months.

Click [HERE](#) to read more!



## Overseeding Pastures in Kentucky

-Ray Smith

Overseeding of pastures is an excellent management tool that improves pasture production, forage quality, and ensures a good ground cover the following year without major pasture renovations. Overseeding consists of planting seed in a field with existing grass cover in order to fill in bare patches and thicken the stand. It can be done over the entire pasture or limited to trouble areas.

Click [HERE](#) to read more!



## Forage Timely Tips

- Do NOT graze cool-season pastures closer than 3 to 4 inches to conserve soil moisture and to prevent overheating of the crowns.
- If drought conditions limit pasture growth, close off pastures and feed hay in a sacrifice area.
- Graze warm season annuals or perennials to allow cool season grasses to recover.
- After the first good rain in August, seed winter annuals (such as small grains, ryegrass, crimson clover, and brassicas) for late fall and early spring grazing.
- Plant alfalfa after first good rain in August to allow sufficient size going into winter and reduce potential for sclerotinia damage.
- Consider renovation of cool-season grass pastures that have thinned.
- In mid-August to early September, exclude livestock from pastures to be stockpiled and apply 60 lb N/A and any need P and K





## Fresh Corn with Jalapeño Peppers

**2 cups** water  
**1 cup** jasmine rice  
**2 teaspoons** cumin  
**6 ears** fresh corn

**2 to 4** fresh jalapeño peppers  
**1 large** tomato  
**2 tablespoons** chopped pimiento peppers

**1/3 cup** diced red onion  
**2 tablespoons** butter  
**1/4 teaspoon** salt  
Pinch of black pepper

Bring water to a **boil** in a medium saucepan. **Stir** in rice and cumin, **cover** and **reduce** heat to **low**. Do not remove **lid** while rice is cooking. **Simmer** 12 minutes then stir. **Cover**, **turn off** heat and let rice **set** an additional 10 minutes or until tender and **all** the water is absorbed. **Wash** **all** fresh ingredients. **Cut** corn kernels off cob. **Dice** jalapeño peppers and tomato. You may want to wear **gloves** while dicing the hot peppers. **Combine** corn, jalapeños, tomato, pimiento peppers, onion, and butter

in a microwave-safe bowl. **Cover** and **cook** in microwave oven on high until heated through, about 4 to 5 minutes. **Stir** every minute. **Add** salt and black pepper. **Combine** corn mixture and cooked rice. **Fluff** mixture with a fork.

**Yield:** 6, 3/4-cup servings

### Nutritional Analysis:

250 calories, 6 g fat, 3 g saturated fat, 10 mg cholesterol, 120 mg sodium, 47 g carbohydrate, 9 g sugar, 0 g added sugar, 6 g protein.

## Conservation Corner

Here are some ways the Scott County Conservation District can help you!

### Backyard Conservation

Programs Include:

- Plant a Tree – 50% cost-share up to \$100
- Pollinator Plot – 50% cost-share up to \$100
- Rain Barrel Kit – 50% cost-share up to \$25.00
- Garden Cover Crop – Free bags of wheat seed

Scott County Conservation District

100 E Penn Ave (M-F 9:00 – 2:00pm),

502-863-2466, [scottcountycd@yahoo.com](mailto:scottcountycd@yahoo.com)

### Local Cost Share

Programs Include:

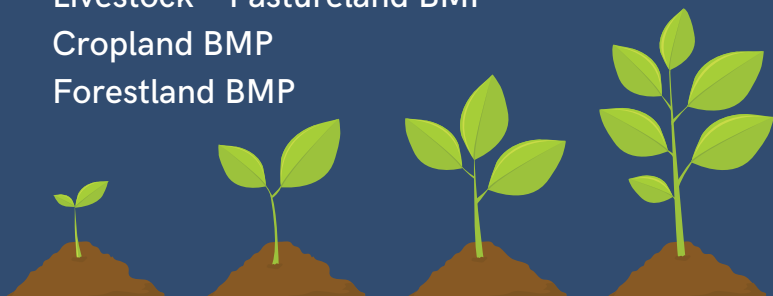
- Gateway, Barn Entrance & Heavy Traffic Corridor Erosion Control Program
- Pipeline and Waterer
- Cover Crop
- Pasture Renovation

### State Cost Share

Applications accepted for 2026 funding until October 30, 2025

4 Areas of Interest:

- Livestock – Animal Feeding Operations (AFO)
- Livestock – Pastureland BMP
- Cropland BMP
- Forestland BMP





# Livestock

## Strategies for Easing the Weaning Process for Beef Calves

-Barbi Riggs, Chad Mueller, and Reinaldo Cooke

Weaning is considered one of the most stressful periods in the productive life of a beef calf. During the weaning process, calves are exposed to various stressors that include removal from their dam, physiological changes (actively developing lean tissue or muscle), castration, vaccination, dehorning, exposure to novel pen or pasture environments, possible changes in feed and water sources, and for many spring-born calves, exposure to season climate changes.

Click [HERE](#) to read more!



## Tips for Selling Sheep and Goats Through Public Livestock Auctions

-Susan Schoenian

There are many advantages to marketing livestock through a public livestock auction, sale barn, or stockyard. It is convenient and easy. There are usually regular weekly sales. Sometimes, there are special graded sales or sales that cater to the increased demand for sheep and goats prior to various religious holidays.

Click [HERE](#) to read more!



## Four Autumn Feeding Facts for Horses

-Kentucky Equine Research Staff

As summer transitions into autumn, new horse-keeping challenges arise. Be on the lookout for these four potential problems.

1. Deteriorating pasture quality warrants a diet overhaul.
2. Autumn pasture or forage can present risks.
3. Wilting maple leaves can be especially problematic, even fatal.
4. Manure stockpiling leads to parasite woes.

Click [HERE](#) to read more!





# NATURAL RESOURCES

## Kentucky Fish and Wildlife Announces New or Amended Regulation

-Kentucky Department of Fish and Wildlife

In accordance with KRS 150.025, the Kentucky Department of Fish and Wildlife Resources is providing updated information about proposed fish and wildlife-related regulation amendments that have received final legislative approval and are now in effect.

The following summarizes provisions that relate to or affect Kentucky Fish and Wildlife and services the agency provides to hunters, anglers and the public at large.

Click [HERE](#) to read more!



## Enhancing White-Tailed Deer Habits on Your Property: Food Plots

-Robert A. Pieve, Emily Flinn, Paul Lowry and Brab Mormann

Landowners who are managing their land for white-tailed deer may consider planting food plots to provide a supplemental food source (Figure 1). On some properties, establishing and maintaining food plots can provide supplemental food and nutrition for deer, but food plots should never be considered a substitute for managing the native vegetation to provide quality food sources. In situations where food plots would contribute to deer management objectives, the plots need to be established and maintained properly.

Click [HERE](#) to read more!





You're Invited to  
Scott County Conservation District

## *HARVEST DAY BANQUET*



September 23, 2025

6:00pm

At Evan's Orchard Event Barn

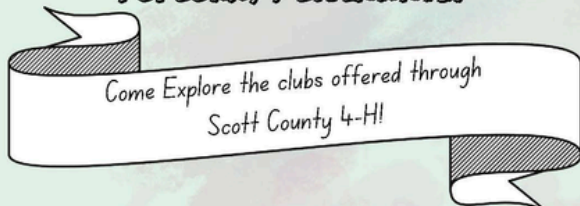
Located at 434 Stone Road; Georgetown

(Join us for dinner, small program and door prizes)

Please RSVP at 502-863-2466 or [scottcountycd@yahoo.com](mailto:scottcountycd@yahoo.com)

## SCOTT COUNTY 4-H OPEN HOUSE

*DROP IN BETWEEN 5 - 7 PM TO LEARN ABOUT 4-H  
OPPORTUNITIES AND ENJOY SOME  
POPCORN, & GIVEAWAYS!*



Come Explore the clubs offered through  
Scott County 4-H!

SCOTT COUNTY EXTENSION OFFICE  
SEPTEMBER 4TH  
5-7 PM



MOST CLUBS ARE FREE TO JOIN, MEET MONTHLY, AND ARE OPEN TO ALL SCOTT COUNTY YOUTH

# August Events



## Kentucky State Fair

August 14th - 23rd

at

the Kentucky State  
Fair Grounds

Click [HERE](#) for a  
detailed schedule!

## Save THE DATE

### 55th Farm City Banquet

November 25th, 2025

at the Scott County  
Extension Office!

Doors open at 5:30 with  
dinner starting at 6:00.

# FEEDER CALF GRADING SCHOOL

Join us for an engaging feeder calf program where you will gain experience in grading and evaluating feeder calves. Learn key strategies to improve your marketing success and maximize profits.

**REGISTER NOW**

**September 8<sup>th</sup>**

**6:00pm at Bluegrass Stockyards  
Please RSVP by Friday August 29th  
FOR MORE INFORMATION OR TO RSVP**



Call your county  
Extension Office



4561 Iron Works Pike,  
Lexington, KY 40511



**Event sponsor: CATTLE CO.**





# SURVIVING HIGH PRICES\$

## WEBINAR SERIES



**WEDNESDAYS: 2-3 P.M. ET | 1-2 P.M. CT | 12-2 P.M. MT | 11-12 P.M. PT**

Join us for a 6-week series to learn about & discuss the uniqueness of the current cattle cycle so we can better understand how to help our producers manage their operations through record-high prices!

Speakers will include Extension economists and specialists from across the United States.

DATES	TOPICS
September 10	Industry Margins & Beef Demand
September 17	Differences in this Cattle Cycle & Import Dynamics
October 1	Risk Management & What To Do With Profits
October 8	Operation Resiliency & Contract Grazing
October 22	Integrated Crop-Livestock Systems & How Not to Need a Hay Baler
October 29	Defining "Better Genetics" & Economics of Reproduction Strategies

Visit this link or scan the QR Code to register: [bit.ly/register-for-SHPwebinar](https://bit.ly/register-for-SHPwebinar)



# BEEF BASH

*Save the Date*

**SEPTEMBER 20, 2025**

**9:00 AM - 3:30 PM**

**C. ORAN LITTLE RESEARCH FARM**

 Cooperative  
Extension Service

## All About Goats! Webinar

JOIN EXTENSION AND INDUSTRY PROFESSIONALS FOR THE FALL 2025 SERIES



### Goat Health and Care Sept. 22

During this session, Extension Specialist, Dr. Brady Campbell, will review proper care for goats of all ages and explain how to help keep them healthy and continue production.

### Farm Business and Management Oct. 6

Extension Specialist, Eric Richer, and Extension Educator, Pressley Buurma, will help guide participants in farm management strategies and provide options for enterprise budgeting and record keeping as it relates to goat production.

### Goat Processing Oct. 20

Throughout this presentation, Extension Specialist, Dr. Lyda Garcia, will explain the cuts of a carcass and how to process a goat at home.

### Livestock Marketing Nov. 3

Join us as Extension Specialist, Garth Ruff, discusses the ins and outs of the goat market. He will also discuss how to market goats to fill the current wants and needs of the customers.

### Hay and Grain Production Nov. 17

Throughout this session, Extension Educator, Jordan Penrose, will present tips and tricks on hay and grain production for goats as well as what type of crops would work best for your production system.

### Coyote Management Dec. 1

This session is going to focus on how to manage interactions between coyotes and goats. Experts will also explain the current status of coyote research in Ohio.

### Open Forum: Ask Me Anything Dec. 15

Have a burning question that was not answered during one of our past webinar sessions? Join Extension Educators and Specialists to get your questions answered!

Webinars are hosted via Zoom (7-8 p.m. EST). Register at:

[go.osu.edu/allaboutgoats25](https://go.osu.edu/allaboutgoats25)



**THE OHIO STATE  
UNIVERSITY**

EXTENSION



# 2025 Horses & Horsemen:

Farm & Facilities Expo

Tuesday, September 16th

RSVP to Bourbon County Extension Office: 859-987-1895

## Schedule:

5:00: Registration and Trade Fair

6:00: Dinner

6:15: Welcome & Farm Overview

Arena footing and maintenance - Dr. Coleman, UK Equine Extension Specialist

Pasture Walk —Central KY ANR Agents

Heavy Use Areas & Farm Infrastructure— Dr. Bob Coleman

Horsemanship Demo - Mike & Chris Stokley

## Location:

Mike & Chris Stokley

Big Creek Livestock

1310 Thatchers Mill Rd  
Paris, KY 40361



College of Agriculture,  
Food and Environment  
Cooperative Extension Service



University of  
Kentucky  
Ag Equine Programs  
College of Agriculture, Food and Environment

Cooperative  
Extension Service

Agriculture and Natural Resources  
Family and Consumer Sciences  
4-H Youth Development  
Community and Economic Development

MARTIN-GATTON COLLEGE OF AGRICULTURE, FOOD AND ENVIRONMENT

Educational programs of Kentucky Cooperative Extension serve all people regardless of economic or social status and will not discriminate on the basis of race, color, ethnic origin, national origin, creed, religion, political belief, sex, sexual orientation, gender identity and/or expression, pregnancy, marital status, genetic information, age, ancestry, disability or mental condition or physical condition, or on the basis of any other characteristic prohibited by applicable federal, state, or local laws. Program information may be made available in languages other than English. University of Kentucky, Kentucky State University, USA Department of Agriculture and Kentucky Counties, Commonwealth of Kentucky, KY 40305



Disability  
accommodated  
with prior notice

## 2025 CENTRAL KENTUCKY HAY IMPROVEMENT PROGRAM

Testing provides nutritional value of hay to assist in balancing rations, and can result in reduced feed cost, increased animal performance, and information to improve forage stands.

Free analysis to determine hay quality and livestock needs.

Call your local  
Extension Office to  
sign up.



Martin-Gatton  
College of Agriculture,  
Food and Environment

DEADLINE TO REGISTER:  
September 29

## 2025 Intermediate Grazing School

*This program is designed for producers and agricultural professionals to sharpen their skills as a grazer. Topics covered include grazing math, portable watering systems, forage plant identification and growth, nutrient cycling in healthy pasture ecosystems, and more with an emphasis on ruminants – beef, sheep, dairy, goats.*

**Wednesday, September 24 & Thursday, September 25, 2025**

Woodford County Extension Office

184 Beasley Road

Versailles, KY 40383

7:30 a.m. – 4:00 p.m. EST

**COST:** \$60/participant -- includes notebook, refreshments, and lunches

**ONLINE Registration with Credit Card:**

<https://2025IntermediateGrazing.eventbrite.com>

